



KAPOW OPERATION MANUAL

Galaxy America, Inc.



7431 Sawyer Circle, Port Charlotte, FL 33981



941 697 0324



941 697 1249



sales@galaxymultirides.com



www.galaxymultirides.com



GalaxyMultiRides



GalaxyBulls



GalaxyBulls



GalaxyMultiRides

IAAPA



MEMBER



INTERNATIONAL
Standards Worldwide
MEMBER

1747743

Welcome and thank you for purchasing Galaxy's KAPOW.

**Please take some time and read through the contents of this manual
BEFORE you use your machine.**

All operators who will use the Galaxy KAPOW Ride **MUST read** this manual
to ensure a **safe operation** for your customers.

TABLE OF CONTENTS

1. Welcome	3
2. What's in the Box	4
3. Electrical Information	4
4. Setting Up Your KAPOW	6
5. Set Up Diagram	12
6. Operating Your KAPOW	13
7. Rules of Play	15
8. Serial Number Location	16
9. Trouble Shooting	17
10. Maintenance	24
11. Safety Check Routine	25
12. KAPOW Motion Base Lubrication Points	26
13. Safety Questionnaire	27
14. Risk Assessment	29
15. Release of Liability and Assumptions of Risk	30
16. Incident Report	31
17. FR Test Certificates	32
18. Manufacturer's Inspection	36
19. Warranty	37
20. Terms and Conditions of Sale	38



Welcome!

All equipment manufactured by Galaxy Multi Rides is designed with a high regard for safety as well as operational ease.

The information contained within this manual will assist you and your operators in producing safe and enjoyable entertainment for your clients.

This instruction manual has been supplied for the purpose of assisting you in the proper and safe operation of your new Galaxy Multi Rides game. You can also find this manual online in our website. Look for "Safety and Training" under the "Resource" tab in www.galaxymultirides.com. You can also view our safety video ("How To" playlist) on our YouTube channel (www.youtube.com/galaxybulls).

This manual will also guide you through the proper set up procedures, ensuring the safest and most enjoyable experience for your clientele, and maintenance recommendations that will facilitate top performance and a long life for your game. Your inflatable attraction is constructed by following the procedures and using quality materials, all in compliance with the ASTM standards.

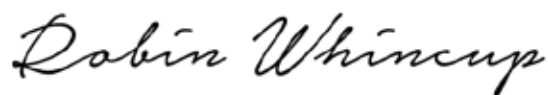
Galaxy Multi Rides takes great pride in delivering to you inflatable games manufactured, inspected and tested with a focus on the highest safety standards and top quality workmanship. Additionally, many other inspections and tests are performed to ensure your new game meets the first class standards of Galaxy Multi Rides.

Safety is everybody's major concern. At Galaxy we go to great lengths to ensure that our products are the safest on the market. Following, and in our website (look for "Safety and Training" under the "Resource" tab in www.galaxymultirides.com), there's a training Safety Questionnaire. **PLEASE, read this manual thoroughly and complete the questionnaire for every member of staff who's going to operate the ride.** All the answers to the questions are in this manual.

Once you've completed it, fax it to **941 697 1249** or email it to **customerservice@galaxymultirides.com**. If you do the test online, you don't need to fax it or email it: just click "Submit". We will check the questionnaire and if all the questions are answered correctly, we will issue a certificate of competence which can be given to your insurance company.

By having a quality safe machine and competent operators, this can only be a good thing, which will result in more cost effective insurance for everyone.

If you experience any difficulty in any of the procedures set forth in this manual, please call 941 697 0324.



Robin Whincup
President of Galaxy Multi Rides



What's in the Box



- 1 x Motion Base
- 4 x Steel Stabiliser Legs
- 4 x Wheels
- 1 x Control Console
- 4 x Steel Poles
- 4 x Foam Booms
- 2 x Steel Handle Bars
- 2 x Power Leads
- 1 x Inflatable
- 2 x Blowers
- 1 x 19mm. wrench
- 8 x 24" Rebar Stakes
- 1 x Repair Kit

Electrical Information

MOTION BASE

Powered by two motors of 1hp. via the control console. 96in. tall x 36in. diameter x 72in. round diameter.



BLOWERS

Powered by two 2hp. They operate from 110 volts single phase electricity 60hz., both blowers drawing 12 amps. Maximum air volume: 1290cfm/each. Maximum static pressure: 9.8 inch/each.



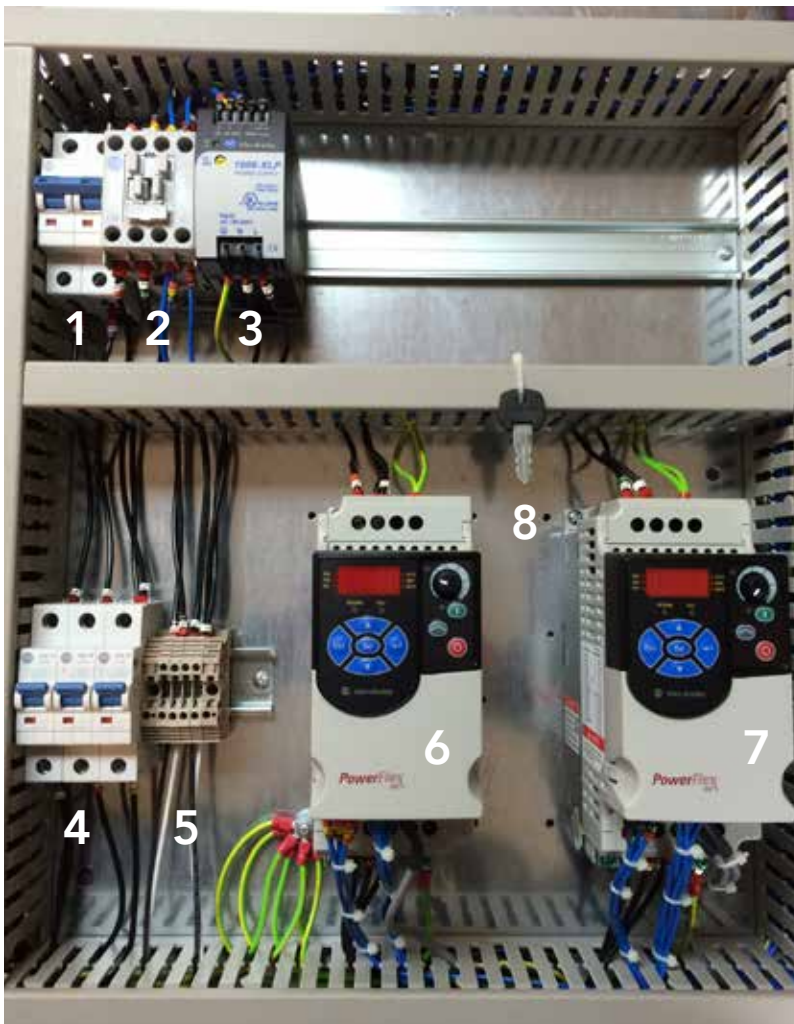
Electrical Information

CONTROL CONSOLE

Operates from 110 volts single phase electricity 60htz. drawing 11 amps.



1. Emergency Stop
2. Power Light Indicator
3. Start Button
4. Speed Control
5. Stop Button
6. Main Power Switch



1. Main Breakers
2. Contactor
3. 24 Volt Power Supply
4. Line Breakers
5. Terminal Block
6. Inverter 1
7. Inverter 2
8. Spare Emergency Stop Key

WARNING

SWITCH OFF THE MAINS POWER BEFORE WORKING ON THE CONTROL CONSOLE AND MOTION BASE. ALL WORKS MUST BE CARRIED OUT BY A QUALIFIED ELECTRICIAN. **ELECTRIC CURRENT CAN KILL YOU.**



Setting Up Your KAPOW

1.



Place the control console to one side on a clean, dry and flat surface, and connect the motion base cable and the mains power. Ensure the cable that plugs to the motion base it's in a line from the motion base to the console.

2.



Place the inflatable in the center of the surface and start unrolling it. Ensure the cable that connects the control console to the motion base is in the center square of the inflatable where the motion base will be placed.



Keep unrolling the inflatable. Unfold one side after the other.



Please note: the Emergency Stop button MUST ALWAYS BE DEPRESSED AND THE KEY REMOVED whenever you are setting up the ride or leaving the control console unattended.



Setting Up Your KAPOW



Make sure the 6 deflation flaps are closed. They have both a zipper and velcro, to ensure the air doesn't come out.

3.



Unvelcro the inflatable to open up the space to place the KAPOW motion base.

4.



The motion base comes in two parts: the top (picture on the left) and the bottom (picture on the right). Make sure the graphics on the top part are folded up, so you're able to see the plate.

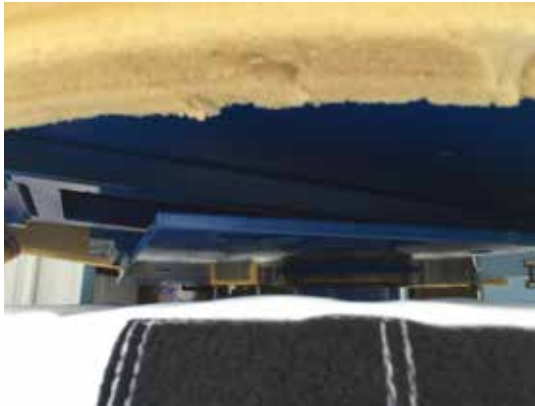


Place the top part of the motion base on the bottom part.

Please note: the Emergency Stop button MUST ALWAYS BE DEPRESSED AND THE KEY REMOVED whenever you are setting up the ride or leaving the control console unattended.



Setting Up Your KAPOW



Place the sub frame in position and pull towards the back. You will feel the sub frame slide under the brackets on the motion base. By gently attempting to lift the top of the attachment you can check that it is secured under the front bracket.



First, tighten the 12mm. by 100mm. draw bolt. Do not over torque it at this time. Now, tighten the two 12mm. bolts to clamp down the bracket with the 19mm. wrench doing 3 or 4 turns on each bolt at a time. These two bolts draw the frame back onto the mounting bracket.



Finally, tighten the 12mm. by 100mm. draw bolt until the ride frame is pulled back fully. Now, tighten up the locking nut on the draw bolt. This bolt pulls the frame down onto the motion base. **IT'S NOT NECESSARY TO OVER TIGHTEN THE BOLTS.**

5.



Now, wheel the motion base to the middle of the cushion using the handle bars. Remove the four wheels of the motion base using the 19mm. wrench tool.

Please note: the Emergency Stop button MUST ALWAYS BE DEPRESSED AND THE KEY REMOVED whenever you are setting up the ride or leaving the control console unattended.



Setting Up Your KAPOW

6.



Introduce the four stabiliser legs under the inflatable and insert the them into the motion base. Tighten the nuts with 19mm. wrench. **DO NOT OVERTIGHTEN THE BOLTS.**

7.



Plug in the power leads to the motion base from the control console. Tie off the 4 small belts in the bottom of the centre hole in the inflatable to the loops in the motion base **loosely**.

8.



Close the inflatable opening and velcro one side to the other.

9.



Slide the correct color coded steel pole to the receiving pole in the KAPOW motion base.

Please note: the Emergency Stop button MUST ALWAYS BE DEPRESSED AND THE KEY REMOVED whenever you are setting up the ride or leaving the control console unattended.

Setting Up Your KAPOW



Tighten the 3 bolts in each pole with a 19mm. wrench. Ensure these are tight.



Slide the foam booms over the steel poles. Make sure the seam on the bottom booms (**red**) are facing **down** to the inflatable. Make sure the seam on the top booms (**blue**) are facing **up** to the sky.



Secure the foam booms tightly to the motion base with velcro.

10.



Pull the blow tube over the blower and secure it with the belt attached. Make sure to close the blow tubes you are not using. Inflation should be the last stage to be done.

Please note: the Emergency Stop button MUST ALWAYS BE DEPRESSED AND THE KEY REMOVED whenever you are setting up the ride or leaving the control console unattended.



Setting Up Your KAPOW

11.



Anchor the inflatable by the 8 anchor points. Use 0.625" diameter steel stakes either straight up or up to a 15 degree angle on soft ground (18" into the ground) or 75lbs. at each of the 8 anchor points in the sand/water weight on hard ground (or indoor location) are appropriate anchor tools (colors may vary from the ones pictured).

12.



Turn the Mains Power button in the control console on, then the key in the Emergency Stop button, and now you are ready to have fun in your KAPOW.

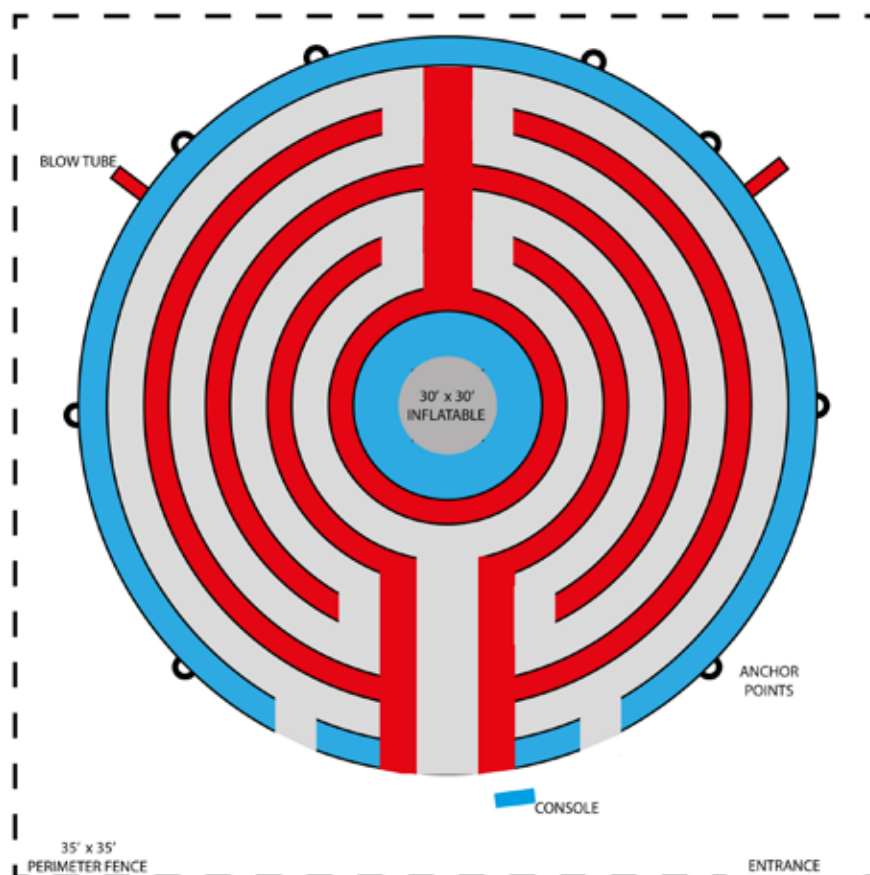
PLEASE NOTE

If you are operating on soft ground (eg: grass or sand), ensure that the motion base is placed on two sheets of 8ft. x 4ft. x 1in. thick plywood. This would ensure that the motion base does NOT dig into the ground. **DO NOT EVER FASTEN THE MOTION BASE TO THE FLOOR, UNDER ANY CIRCUMSTANCES.**

Please note: the Emergency Stop button **MUST ALWAYS BE DEPRESSED AND THE KEY REMOVED** whenever you are setting up the ride or leaving the control console unattended.



Set Up Diagram



Please note: the Emergency Stop button MUST ALWAYS BE DEPRESSED AND THE KEY REMOVED whenever you are setting up the ride or leaving the control console unattended.



Operating Your KAPOW

1. KAPOW

KAPOW is a multi-player game where participants race against each other through a circular inflatable obstacle course.

2. FASCIA PANEL

Switch the power on by turning the red & yellow isolator switch to "ON". Ensure you release the Emergency Stop button by turning the key to the right. You will hear a click and your ride is now ready for use.

3. AUTOMATIC PROGRAMS

There is 1 automatic program. The speed of the program can be adjusted via the speed control dial.

4. NUMBER OF PARTICIPANTS

KAPOW can take up to 6 people at any one time. **DO NOT ALLOW any player to grab, hold and/or swing on any part of the foam booms. DO NOT ALLOW any player to sit and ride on any part of the foam booms.** If any player seems to be in distress, **STOP** the foam booms and engage the Emergency Stop button.

5. PARTICIPANT PREPARATION

Ensure that all participants remove footwear, eye wear, cell phones, neck wear, and any sharp items on their person.

All participants must read the rules of play and sign the waiver. Instruct the participants that they must duck when the foam booms come towards them and that they must not grab the boom.

Verbally warn them that they may get hit by the foam booms. If any players are in any doubt, they must NOT RIDE.

6. OPERATING THE RIDE

KAPOW is multi-player game: 2 people race against each other and up to 6 people can be in the inflatable at the same time.

The top speed is pre set. However, you can reduce the speed of the ride via the speed dial. **Always**

advise the participant that you are increasing the difficulty. If the participants do not want to go faster, respect their decision. **DO NOT** use the inflatable of this game as a bounce house.

The rotating foam booms can be stopped by pressing the **STOP** button. **The operator must keep their finger over the stop button and constantly watch the participants.**

Once the first 2 participants have cleared the first lane, you can send the next 2. **DO NOT ALLOW MORE THAN 6 PLAYERS AT ANY ONE TIME.**

Repeat the procedure.

- In the event of an emergency:

- Depress the Emergency Stop button and remove the key; then turn off the mains power switch. Instruct the players to evacuate the ride safely offering assistance if it is safe to do so. Once the players have evacuated the ride, unplug the control console and blower from the mains power outlet.

- In the event of loss of power to the inflatable -thus causing the inflatable to deflate:-

- Depress the Emergency Stop button and remove the key; then turn off the mains power switch. Instruct the players to evacuate the ride safely offering assistance if it is safe to do so. Once the players have evacuated the ride, unplug the control console and blower from the mains power outlet.

The Emergency Stop button MUST always be depressed and the key removed whenever you are setting up the game or leaving the control console unattended.

7. SPECTATORS

Do not allow spectators to sit/lean on or around the inflatable. We would recommend wherever possible to have an additional external barrier (see diagram example in the previous page).

8. HEIGHT & WEIGHT OF THE PLAYERS

We recommend a minimum user height of 48 inches and a maximum weight of the participant of 200lbs.



Operating Your KAPOW

9. GENERATORS

PLEASE NOTE: THE USE OF PORTABLE GENERATORS TO POWER THE MACHINE CAN DAMAGE THE ELECTRONICS.

If you must use a portable generator, invest in a branded generator such as Honda, Kawasaki or Briggs & Stratton. You will need a 5KVA diesel powered generator, as these give the best power and performance. Use an in line power surge protector between the generator and the control console.

10. KEEPING YOUR MACHINE SAFE

Whenever the machine is left unattended, switch off the isolator and press the Emergency Stop button. Make sure the key is removed. **DO NOT use the Emergency Stop button to stop the ride.** Use the normal stop button to stop the ride.

11. STANDARD DISCLAIMER

If the operator is in any doubt of the players' ability to participate safely, then the player should not be allowed to participate. **THE OPERATORS' DECISION IS ALWAYS FINAL.**

12. WHO SHOULD NOT PLAY

People should not use this ride if the player:

- Is Pregnant.
- Is under the influence of alcohol or drugs.
- Suffers from any of the following: Epilepsy, Muscular Complaints, Neck or Spinal (back) problems, or any other Physical Ailment that will inhibit the participant to ride safely.

13. DYNAMIC INFORMATION

The recommended minimum **operating space** required is: 35' x 35' x 14' headroom.

- **Weights of individual components:**

- Motion base: 460lbs.
- 4 foam boom attachments & poles: 174lbs.
- Control console: 85lbs.
- Inflatable: 620lbs. | 54in. x 48in.
- Electric blower x 2: 30lbs.
- Stabiliser legs x 4: 12lbs.

- Total unladen load combine weight of the system when erected: 1447lbs.
- Total maximum laden load (with heaviest rider): 2647lbs.

- **Maximum speeds:**

- Spin motor: 21.24rpm.

- **Power requirements:**

- The system operates from 110 volts single phase electricity 60hz. drawing 23 amps.
- The 1.5hp. inflation blowers for the inflatable operates from 110 volts single phase electricity 60hz., both drawing 12 amps.
- Maximum air volume: 1290cfm/each blower.
- Maximum static pressure: 9.8 inch/each blower.

- **DO NOT operate when it is raining or snowing as there is a risk of electrocution.** In the event of a sudden rain/snow storm:

- Evacuate the ride.
- Turn off the control console and blower and disconnect the mains power cords from the electrical supply.
- Remove the control console & blower to covered shelter.
- Ensure that a tarpaulin or similar water proof cover is placed securely over the inflatable, attachment & motion base to prevent water damage. Once it has stopped raining/snowing, uncover the inflatable & motion base and check that there is no water leakage to these parts; ensure that any standing water is removed and/or relocate the ride to a dry location. **AT NO TIME should you use any electrical device when wet.**

- **DO NOT operate in winds of more than 20mph.**



RULES OF PLAY

DO DON'T

- Have a maximum of 6 players at a time.
- Duck the sweeper arms.
- HAVE FUN!
- Swing or jump on any of the sweeper arms.
- Ride the sweeper arms.
- Grab/Hold any parts of the sweeper arms.

NO SHOES

NO SHARP OBJECTS

NO GLASSES

NO FLIPS

**NO FIGHTING OR
ROUGH HOUSING**

NO CHEWING GUM

NO FOOD

NO DRINK

**NO CLIMBING ON
WALLS**

NO HATS

WHO SHOULD NOT PLAY

People should not use this ride if the player:

- Is Pregnant.
- Cannot mount the ride and hold on securely.
- Is under the influence of alcohol or drugs.
- Suffers from any of the following: Epilepsy, Muscular Complaints, Neck or Spinal (back) problems, or any other Physical Ailment that will inhibit the participant to ride safely.



Serial Number Location

There are 2 ID plates in your equipment, which include information such as:

- Manufacturer Details
- Serial Number
- Power Requirements
- Name of Equipment
- Name of Customer
- Date of Manufacture
- Initial Test and Date
- Yearly Tests
- Certifications

These ID plates can be found in these 2 locations:



On the inside the motion base panel.



On the inside of the control console door.




Trouble Shooting

Your KAPOW has been meticulously engineered and thoroughly tested before delivery. If, however, you unexpectedly experience difficulties, please check out the guide below. **We DO NOT warranty any parts that are damaged from using a generator.** If you have any questions or need help please contact us on: 941 697 0324 or sales@galaxymultirides.com.

POWER REQUIREMENTS

REGION	POWER REQUIREMENTS
Europe/Asia/South America/ Australasia	230 volts mains power single phase 11.5 amps at 50htz.
North America	110 volts mains power single phase 23 amps at 60htz.
Japan	90 -110 volts mains power single phase 26 amps at 60htz.

ELECTRICITY

WHAT IS THE POWER SOURCE	We recommend to work on mains power. THE USE OF PORTABLE GENERATORS TO POWER THE MACHINE CAN DAMAGE THE ELECTRONICS. But, if you must use a portable generator, invest in a branded generator such as Honda, Kawasaki or Briggs & Stratton. You will need a 5KVA diesel powered generator, as these give the best power and performance. Use an in line power surge protector between the generator and the control console.
HOW MANY AMPS ARE NEEDED	A KAPOW requires 23 amps.
WHAT IS THE OUTPUT POWER FROM THE POWER SOURCE	A KAPOW requires 110-120 volts.
VOLTAGE/AMP METER 	All machines manufactured after 1/8/2014 have a voltage/amp meter installed in the control console. This allows you to see the exact voltage/amps you're receiving from the power source.
LENGTH OF THE EXTENSION CORD AND GAUGE OF THE POWER CORD	Longer thinner power cords will always lose voltage.
THE RIDE IS REALLY SLOW	Check that you have enough voltage & amps to the machine. Once you go over a 30' extension cord, this can contribute to voltage drop: the longer the cord, the worse the problem will be.



Trouble Shooting

ISSUE: THE MACHINE WON'T SPIN

SOLUTIONS:

1.



Is the Emergency Stop button released? Gently turn the key to the right, let go and the button pops up.

2.



1. Is the LED display on the inverter showing 0.0? If not refer to the "Inverters" section on page 18.

3.



Can you hear the motor humming (making noise) as if it is receiving power?

- If yes, the machine is missing a phase. There must be a loose wire/connection in either one of the cords or socket on the motion base or socket on the console. Open up every plug and socket and check the connections. Inspect all cords for any damage that may create a short.
- If not, we recommend a qualified electrician does a continuity test with a meter to determine what parts of the machine are receiving power.

4.



Does the motor move when the impeller is manually moved? Rotate the fan blade by inserting a small screwdriver several times through the air grill pushing on the fan blade. If the motor makes connection with the gear box you will see the machine move fractionally. This means the motor and gearbox are ok and the problem is electrical. If you cannot get it to move, then the issue may be mechanical and the motion base would have to be returned for inspection. **THE MACHINE SHOULD BE UNPLUGGED WITH NO POWER COMING TO IT.**

Trouble Shooting

ISSUE: I HAVE NO POWER TO THE MACHINE

SOLUTIONS:

1.



Check the power cord is connected correctly.

2.



Check the wiring power cord terminals at each end.

3.



Check the breakers inside the control console.

4.



Check the Emergency Stop button is released.

5.






Check the contactor.



Trouble Shooting

ISSUE: THE INVERTER DOES NOT POWER UP OR THERE'S NO DISPLAY

SOLUTIONS:

1. 
Check the breakers inside the control console.
2. 
Check the Emergency Stop button is released.
3. 
Check the contactor.

ISSUE: AN ERROR COMES UP IN MY INVERTER

SOLUTION: This is call a "fault". A fault is a condition that stops the drive. Check in the tables below the most common fault numbers, types, description and actions to solve the error. First, there are two fault types:

TYPE	FAULT	DESCRIPTION
1	Auto-Reset/Run	When this type of fault occurs, and A451 [Auto Rstrt Tries] is set to a value greater than "0", a user-configurable timer, A452 [Auto Rstrt Delay], begins. When the timer reaches zero, the drive attempts to automatically reset the fault. If the condition that caused the fault is no longer present, the fault will be reset and the drive will be restarted.
2	Non-Resetable	This type of fault may require drive or motor repair, or is caused by wiring or programing errors. The cause of the fault must be corrected before the fault can be cleared.



Trouble Shooting

NO.	FAULT	TYPE	DESCRIPTION	ACTION
F2	Auxiliary Input	1	Auxiliary input interlock is open.	1. Check remote wiring. 2. Verify communications programming for intentional fault.
F3	Power Loss	2	DC bus voltage remained below 85% of nominal.	1. Monitor the incoming AC line for low voltage or line power interruption. 2. Check input fuses.
F4	Under Voltage	1	DC bus voltage fell below the minimum value.	Monitor the incoming AC line for low voltage or line power interruption
F5	Over Voltage	1	DC bus voltage exceeded maximum value.	Monitor the AC line for high line voltage or transient conditions. Bus overvoltage can also be caused by motor regeneration. Extend the decel time or install dynamic brake option.
F6	Motor Stalled	1	Drive is unable to accelerate motor.	Increase P109 and/or A402 [Accel Time x] or reduce load so drive output current does not exceed the current set by parameter A441 [Current Limit].
F7	Motor Overload	1	Internal electronic overload trip.	1. An excessive motor load exists. Reduce load so drive output current does not exceed the current set by parameter P103 [Motor OL Current]. 2. Verify A453 [Boost Select] setting.
F8	Heatsink OvrTmp	1	Heatsink temperature exceeds a predefined value.	1. Check for blocked or dirty heat sink fins. Verify that ambient temperature has not exceeded 40°C (104°F) for IP 30/NEMA 1/UL Type 1 installations or 50°C (122°F) for IP20/ Open type installations. 2. Check fan.
F12	HW OverCurrent	2	The drive output current has exceeded the hardware current limit.	Check programming. Check for excess load, improper A453 [Boost Select] setting, DC brake volts set too high or other causes of excess current.
F13	Ground Fault	2	A current path to earth ground has been detected at one or more of the drive output terminals.	Check the motor and external wiring to the drive output terminals for a grounded condition.



Trouble Shooting

NO.	FAULT	TYPE	DESCRIPTION	ACTION
F33	Auto Rstrt Tries	2	Drive unsuccessfully attempted to reset a fault and resume running for the programmed number of A451 [Auto Rstrt Tries]	Correct the cause of the fault and manually clear.
F38	Phase U to Gnd	2	A phase to ground fault has been detected between the drive and the motor in this phase.	1. Check the wiring between the drive and motor. 2. Check motor for grounded phase. 3. Replace drive if fault cannot be cleared.
F39	Phase V to Gnd			
F40	Phase W to Gnd			
F41	Phase UV Short	2	Excessive current has been detected between these two output terminals.	1. Check the motor and drive output terminal wiring for a shorted condition. 2. Replace drive if fault cannot be cleared.
F42	Phase UW Short			
F43	Phase VW Short			
F48	Params Defaulted		The drive was commanded to write default values to EEPROM	1. Clear the fault or cycle power to the drive. 2. Program the drive parameters as needed.
F63	SW OverCurrent	1	Programmed A448 [SW Current Trip] has been exceeded.	Check load requirements and A448 [SW Current Trip] setting
F64	Drive Overload	2	Drive rating of 150% for 1 minute or 200% for 3 seconds has been exceeded.	Reduce load or extend Accel Time.
F70	Power Unit	2	Failure has been detected in the drive power section.	1. Cycle power. 2. Replace drive if fault cannot be cleared.
F81	Comm Loss	2	RS485 (DSI) port stopped communicating.	1. If adapter was not intentionally disconnected, check wiring to the port. Replace wiring, port expander, adapters or complete drive as required. 2. Check connection. 3. An adapter was intentionally disconnected. 4. Turn off using C304 [Comm Loss Action].



Trouble Shooting

F100	Parameter Checksum	2	The checksum read from the board does not match the checksum calculated.	Set P112 [Reset To Defaults] to option 1 "Reset Defaults".
F122	I/O Board Fail	2	Failure has been detected in the drive control and I/O section.	<ol style="list-style-type: none">1. Cycle power.2. Replace drive if fault cannot be cleared.

ISSUE: THE MOTION BASE IS MAKING NOISES**SOLUTIONS:**

Lubricate all bearings on the motion base and the drive chain inside the motion base. In the event of any other issue or problem with your motion base, please mark the location of the issue or problem in the following drawing and fax it back to us at (941) 697-1249.



Maintenance

ITEMS	MAINTENANCE
Inflatable	Wash down it with warm soapy water. Regularly clean the velcro where the inflatable joins together. Remove any debris. This will ensure the velcro doesn't lose its grip.
Electric Cables	Before each new event, check the electric cables and connections for wear or damage.
Lubrication	Lubricate the bushes, rods, bearings, and all moving parts every month (see maintenance schedule in the next page). All grease nipples should be lubricated using Pennzoil Multi Purpose 302 EP (NLGI #2 Lithium grease). All the grease nipples are easily accessible and exposed on the motion base. Contact Galaxy Multi Rides calling to the phone number 941 697 0324 or emailing at customerservice@galaxymultirides.com for replacements.
Foam Booms	Regularly check the foam booms for any excessive wear and tear. Ensure they are securely attached to the cilinder.
Nuts, Bolts and Fixings	Check all nuts, bolts and fixings are tight on a weekly basis.
Cleaning	Use spray polish to clean all high finish GRP surfaces.
Steel Extension Poles (x4)	Regularly check they are not bent or damaged.

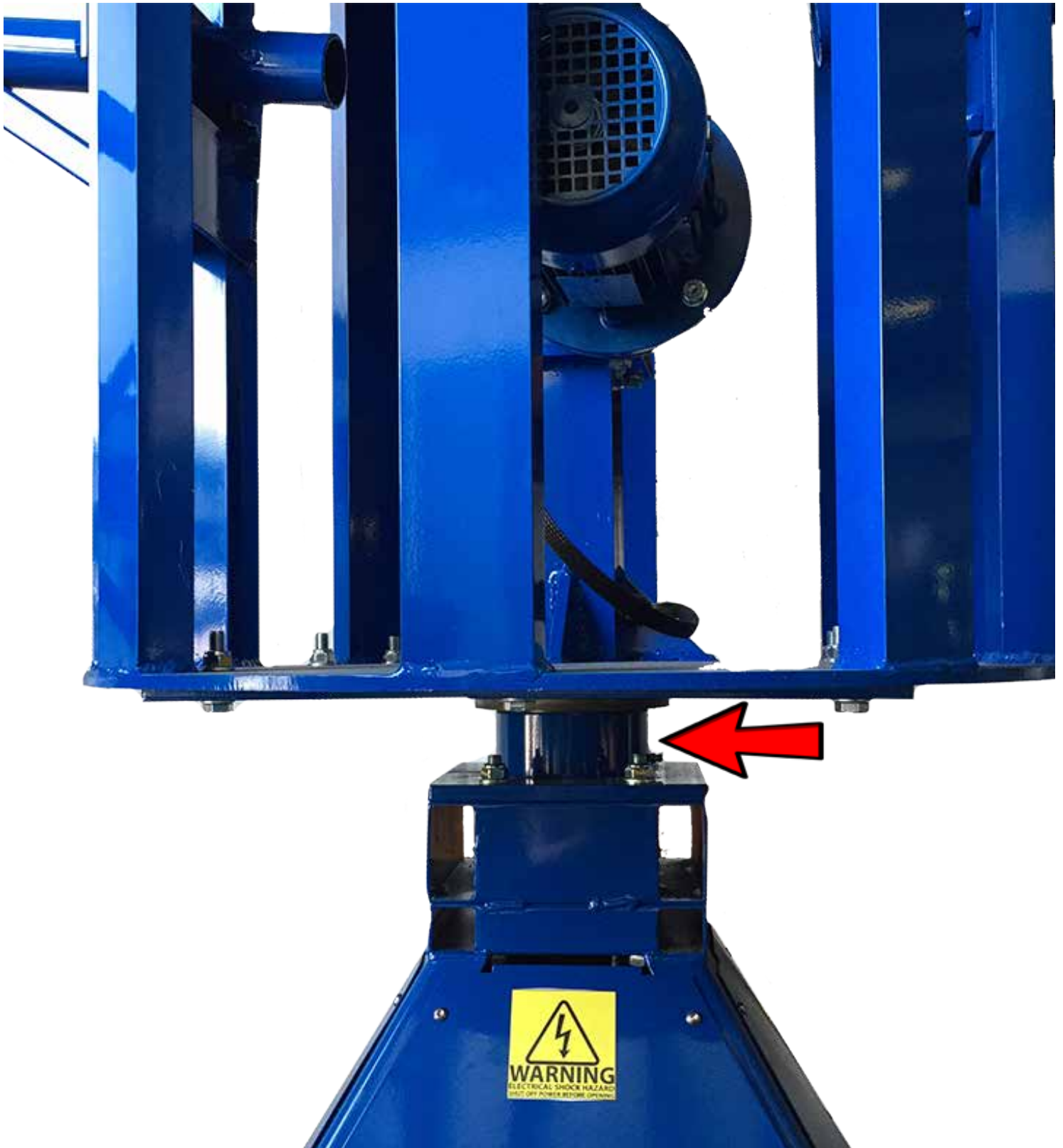


Safety Check Routine (TO BE PERFORMED AT EVERY EVENT)

ITEMS	M	T	W	T	F	S	S
Check all electrical connections on all plug sockets							
Check all nuts and bolts are secure							
Check lubrication points. Lubricate if necessary							
Check all bearings							
Check all rod ends							
Check all fixings for the ride							
During the event, check the ride periodically to secure connection to the motion base							
Check inflatable bed for holes and wear and tear							
Where applicable, ensure the inflatable is securely anchored to the subfloor							
Check the safety padding for holes and wear and tear							
Check the electric fan blower							
Check the foam booms for any excessive wear and tear							
Automatic program button							
Check the Stop/Start button							
Check the manual speed dial							
Check the mains isolator							
Check the Emergency Stop button							



KAPOW Motion Base Lubrication Points



Safety Questionnaire (Some of these questions can have multiple answers. PART 1)

Question 1

How many stabiliser legs are fitted to the motion base?

1. 2
2. 4
3. 6

Question 2

How many tie-off belts are located in the center hole of the inflatable?

1. 2
2. 4
3. 6

Question 3

How many manual speed dials are there on the control console?

1. 1
2. 2
3. 3

Question 4

Should you secure the motion base to the floor?

1. Yes
2. No

Question 5

What's the recommended maximum user weight per person for the KAPOW?

1. 300lbs.
2. 200lbs.
3. 100lbs.

Question 6

What must the operator do at all times?

1. Talk to pretty girls/guys
2. Watch the rider in operation
3. Watch the clock on the console

Question 7

When should the Emergency Stop button be used?

1. Every time to stop the ride
2. When the console is left unattended
3. In emergency situations to kill the power

Question 8

What is the voltage required for the KAPOW?

1. 110 volts
2. 440 volts
3. 220 volts

Question 9

How many players are allowed on the ride at any one time?

1. 6
2. 8
3. 10

Question 10

What's the recommended minimum user height for the KAPOW?

1. 36 inches
2. 48 inches
3. 60 inches

Question 11

How many blowers does the KAPOW need to safely inflate the game?

1. 2
2. 3
3. 4

Question 12

The blowers are connected to the front of the inflatable.

1. True
2. False

Question 13

Which is the correct way to have your system cables set up?

1. It doesn't matter
2. In a line from the motion base to the console
3. Twisted from the motion base to the console

Question 14

How many lubrication points are there in the motion base?

1. 2
2. 10
3. 15

Question 15

How fast do the logs buck on the KAPOW?

1. 15-16 rpm.
2. 30-31 rpm.
3. The KAPOW doesn't buck

Question 16

It's safe to operate the KAPOW in the rain.

1. True
2. False



Safety Questionnaire (Some of these questions can have multiple answers. PART 2)

Question 17

How many connection bolts are there for every KAPOW extension pole?

1. 3
2. 4
3. 5

Question 18

Is it safe to use a surf board, skate board or snowboard in this motion base?

1. Yes
2. No

Question 19

It is OK to allow riders to swing, jump over and ride on the foam booms.

1. True
2. False

Question 20

How many power cords go from the motion base to the console on the KAPOW?

1. 1
2. 2
3. 3

Question 21

How many automatic programs does the KAPOW have?

1. 0
2. 1
3. 2

Question 22

How many spectators should be allowed to sit/lean on or around the inflatable wall?

1. 20
2. 10
3. 0

Question 23

The inflatable can be used as a bounce house.

1. Yes
2. No
3. Sometimes

Question 24

What is the maximum weight of players at any one time?

1. 1,200lbs.
2. 1,500lbs.
3. 2,000lbs.

Question 25

What is the procedure in the event of an emergency?

1. Walk away and go for a cup of coffee
2. Continue normal operation
3. Press the Emergency Stop button and evacuate the ride

Question 26

Is it recommended to leave the machine unattended?

1. Yes
2. No

Question 27

Where must the seam of the booms (foam logs) face?

1. The red booms (bottom) face down to the inflatable. The blue booms (top) face up to the sky
2. The red booms (bottom) face up to the sky. The blue booms (top) face down to the inflatable
3. The red booms (bottom) face right. The blue booms (top) face left

PLEASE NOTE

Complete this questionnaire and fax it back to 941 697 1249 or email it to customerservice@galaxymultirides.com.

You can now also take this test online at galaxymultirides.com/safety-training. Once you've completed it, simply click "Submit".

If you have answered the questions correctly, we will issue a Certificate of Training for your Galaxy Mechanical Multi Ride, which can be given to your insurance company.



Risk Assessment for the Galaxy Multi Ride

This risk assessment is specifically for the Galaxy Multi Ride and is not applicable to any other brand of mechanical multi ride system.

1. RISK

Sudden deflation of inflatable surround.

SOLUTION

Stop the ride immediately and evacuate the participants. Check the blower: is there power to the blower?

- If no, check fuse and mains supply and power cable for any damage.
- If yes, check the air intake on the blower is not blocked. Check & ensure deflation zips are fully closed. Check to make sure there are no tear's or holes in the inflatable.

2. RISK

The motion base is rocking & unstable.

SOLUTION

Stop the ride immediately and evacuate the players; ensure that you have secured the four steel stabiliser legs in to the motion base properly.

3. RISK

The motion electrical base of the KAPOW is loose and wobbling.

SOLUTION

Stop the ride immediately and evacuate the participants. Ensure that the center piece is connected to the top of the motion base correctly and ensure that all three screw bolts are securely tightened.

4. RISK

The view of the operator is obscured by the audience.

SOLUTION

Stop the ride immediately and evacuate the players. Ensure that the control console is pushed up to the edge of the inflatable cushion so no one can stand in front of the operator.

5. RISK

Trip hazard from trailing cables.

SOLUTION

Ensure all trailing cables & cords are taped to the sub floor or covered with a suitable matting or trunking.

6. RISK

The participants are able to touch the ceiling or hanging light.

SOLUTION

Stop the ride immediately and evacuate the participants. The minimum headroom required is 14' (4.3m.). Do not use the ride in buildings or areas with any less headroom.

7. RISK

Potential collision by the participants with a member of the audience.

SOLUTION

Stop the ride immediately and evacuate the players. Ensure that no member of the public/ audience is allowed to sit on the edge of the inflatable surround. Erect a secondary perimeter barrier 3' (1m.) away from the edge of the inflatable surround.



Release of Liability and Assumption of Risk

In consideration of the services of _____, its employees and agents (collectively, "_____"), I agree to release, hold harmless and indemnify _____, on behalf of myself and my family members, partners, heirs and assigns as follows:

1. I acknowledge that riding a _____ (name of the ride) entails risks that could result in physical or emotional injury, paralysis, death, injury or damage to me, to property, or to third parties. I understand that the risks cannot be eliminated without jeopardizing the essential qualities of the activity. The risks could result in musculoskeletal injuries, including head, neck, and back injuries.
2. I accept and assume all the risks of participating in this activity. My participation in this activity is purely voluntary, and I elect to participate in spite of the risks.
3. **I release and agree to indemnify and hold harmless _____ from any claims** that are in any way connected with my participation in this activity or my use of _____ equipment or facilities, **including claims that _____ was negligent.** However, I do not release any claims related to intentional or reckless acts by _____.
4. I have adequate insurance to cover any injury or damage I may cause or suffer while participating or I agree to bear the costs of any injury or damage.
5. I agree that, if I bring a lawsuit against _____, I will do so solely in the State of _____ and the substantive law of the State of _____ will apply in that lawsuit without regard to the conflict of law rules. I agree that if any portion of this agreement is found to be void or unenforceable, the remaining portions shall remain in full force and effect.

By signing this document, I acknowledge that if that anyone is hurt or property is damaged during my participation in this activity, I may be found by a court of law to have waived my right to maintain a lawsuit against _____ on the basis of any claim from which I have released them. I have had sufficient opportunity to read this agreement. I have read and understood it, and agree to be bound by its terms.

Signature of Participant: _____

Print Name of Participant: _____ Date: _____

PARENT'S OR GUARDIAN'S ADDITIONAL INDEMNIFICATION (Must be completed for participants under the age of 18)

In consideration of _____ ("Minor") being permitted by _____ to participate in its activities and to use its equipment and facilities, I further agree to indemnify and hold harmless _____ from all claims which are brought by or on behalf of Minor and which are in any way connected with Minor's use or participation. I have full authority to sign this agreement on behalf of Minor.

Signature of Parent or Guardian: _____

Print Name of Parent or Guardian: _____ Date: _____



Incident Report

OWNER'S NAME:

TRADE NAME:

ADDRESS:

PHONE NUMBER:

TODAY'S DATE:

LOCATION OF THE INCIDENT:

DATE AND TIME OF THE INCIDENT:

NAME OF PERSON FILLING THE FORM:

TITLE OF PERSON FILLING THE FORM:

INFORMATION OF THE PERSON INJURED AND INCIDENT	
FULL NAME	
AGE	
ADDRESS	
INCIDENT SEVERITY	
DESCRIBE THE NATURE OF INJURY	
WEATHER CONDITIONS	
DESCRIPTION OF INCIDENT	
NAME OF OPERATOR	
WITNESSES (include names, addresses, and relation to the owner or injured)	

DISCLAIMER: This checklist is intended as a suggested guideline. It is recommended that an incident report include but should not be limited to the items listed on this form.



FR Test Certificates



TEST REPORT

No. : GZIN1502006276PS

Date : Feb 15, 2015

Page: 1 of 4

CUSTOMER NAME: GUANGZHOU PLATO PLASTIC CO., LTD
ADDRESS: DAYUAN VILLAGE HENGLI TOWN NANSHA DISTRICT GUANGZHOU
CITY GUANGDONG CHINA

The following sample(s) was/ were submitted and identified on behalf of the client as:

Sample Name : PVC TARPAULIN
SGS Ref. No. : SDHG1502002308FB
Manufacturer : PLATO PLASTIC CO.,LTD
Date of Receipt : Feb 11, 2015
Testing Start Date : Feb 11, 2015
Testing End Date : Feb 15, 2015
Test result(s) : For further details, please refer to the following page(s)

Signed for
SGS-CSTC Standards Technical
Services Co., Ltd. GZ Branch Testing
Center

Eleain Fan
Authorized signatory



This document is issued by the Company subject to its General Conditions of Service printed overleaf, available on request or accessible at <http://www.sgs.com/en/Terms-and-Conditions.aspx> and, for electronic format documents, subject to Terms and Conditions for Electronic Documents at <http://www.sgs.com/en/Terms-and-Conditions/Terms-e-Document.aspx>. Attention is drawn to the limitation of liability, indemnification and jurisdiction issues defined therein. Any holder of this document is advised that information contained hereon reflects the Company's findings at the time of its intervention only and within the limits of Client's instructions, if any. The Company's sole responsibility is to its Client and this document does not exonerate parties to a transaction from exercising all their rights and obligations under the transaction documents. This document cannot be reproduced except in full, without prior written approval of the Company. Any unauthorized alteration, forgery or falsification of the content or appearance of this document is unlawful and offenders may be prosecuted to the fullest extent of the law. Unless otherwise stated the results shown in this test report refer only to the sample(s) tested and such sample(s) are retained for 30 days only.

Attention: To check the authenticity of testing / inspection report & certificate, please contact us at telephone: (86-755) 8387 1443, or email: CN.Doccheck@sgs.com
188 Keds Road, Sorned Park Guangzhou Economic & Technology Development District, Guangzhou, China 510663 t (86-20) 82155861 f (86-20) 82075080 www.sgs.com.cn
中国·广州·经济技术开发区科学城科韵路188号 邮编: 510663 t (86-20) 82155861 f (86-20) 82075080 e sgs.china@sgs.com

Member of the SGS Group (SGS SA)





TEST REPORT

No. : GZIN1502006276PS

Date : Feb 15, 2015

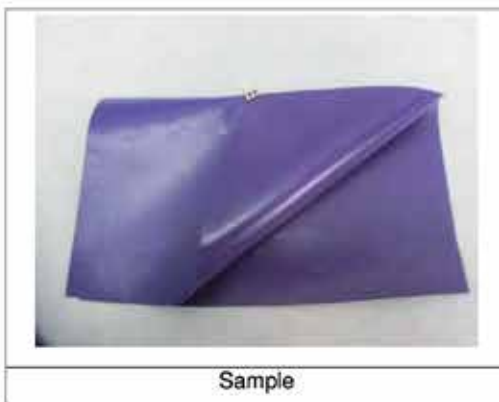
Page: 2 of 4

Summary of Results:

No.	Test Item	Test Method	Result	Conclusion
1	Flame Test	NFPA 701 Test Method 1-2010	See Result	Pass

Note: Pass : Meet the requirements;
Fail : Does not meet the requirements;
/ : Not Apply to the judgment.

Original Sample Photo:



This document is issued by the Company subject to its General Conditions of Service printed overleaf, available on request or accessible at <http://www.sgs.com/en/Terms-and-Conditions.aspx> and, for electronic format documents, subject to Terms and Conditions for Electronic Documents at <http://www.sgs.com/en/Terms-and-Conditions/Terms-e-Document.aspx>. Attention is drawn to the limitation of liability, indemnification and jurisdiction issues defined therein. Any holder of this document is advised that information contained hereon reflects the Company's findings at the time of its intervention only and within the limits of Client's instructions, if any. The Company's sole responsibility is to its Client and this document does not exonerate parties to a transaction from exercising all their rights and obligations under the transaction documents. This document cannot be reproduced except in full, without prior written approval of the Company. Any unauthorized alteration, forgery or falsification of the content or appearance of this document is unlawful and offenders may be prosecuted to the fullest extent of the law. Unless otherwise stated the results shown in this test report refer only to the sample(s) tested and such sample(s) are retained for 30 days only.

Attention: To check the authenticity of testing/inspection report & certificate, please contact us at telephone: (86-22) 82071443, or email: CS.Discuss@sgs.com

SGS (Shanghai) Technical Service Co., Ltd.
Guangzhou Branch

ShenZhen Road, Science Park Guangzhou Economic & Technology Development Zone, Guangzhou, China 510663. T (86-20) 82156661 F (86-20) 82073086 www.sgs.com.cn
中国·广州·经济技术开发区科学城珠路198号 邮编: 510663 T (86-20) 82156661 F (86-20) 82073086 # sgs.china@sgs.com

Member of the SGS Group (SGS SA)





TEST REPORT

No. : GZIN1502006276PS

Date : Feb 15, 2015

Page: 3 of 4

Test Conducted:

NFPA 701 Test Method 1-2010 Edition: Standard Methods of Fire Tests for Flame Propagation of Textiles and Films

General Information:

Materials / Color	PVC / Purple	Weight	669 g/m ²
Refurbishing or Weathering Conditions	NO (As per client's requirement)		
Conditioning	Dry at (105±3)°C, Duration: 30min Temperature: (20±5) °C, Relative Humidity: (50±5)%, Duration: 24 h		

Requirements:

1. Fragments or residues of specimens that fall to the floor of the test chamber shall not continue to burn for more than an average of 2 seconds per specimen for the sample of 10 specimen.
2. The average weight loss of the 10 specimen in a sample shall be 40 percent or less.
3. No individual specimen's percent mass loss shall deviate more than 3 standard deviations from the mean for the 10 specimens.



This document is issued by the Company subject to its General Conditions of Service printed overleaf, available on request or accessible at <http://www.sgs.com/en/terms-and-conditions.aspx> and, for electronic format documents, subject to Terms and Conditions for Electronic Documents at <http://www.sgs.com/en/terms-and-conditions/terms-e-document.aspx>. Attention is drawn to the limitation of liability, indemnification and jurisdiction issues defined therein. Any holder of this document is advised that information contained hereon reflects the Company's findings at the time of its intervention only and within the limits of Client's instructions, if any. The Company's sole responsibility is to its Client and this document does not exonerate parties to a transaction from exercising all their rights and obligations under the transaction documents. This document cannot be reproduced except in full, without prior written approval of the Company. Any unauthorized alteration, forgery or falsification of the content or appearance of this document is unlawful and offenders may be prosecuted to the fullest extent of the law. Unless otherwise stated the results shown in this test report refer only to the sample(s) tested and such sample(s) are retained for 30 days only.

Attention: To check the authenticity of testing / inspection report & certificate, please contact us at telephone: (86-755) 8397 1443, or email: CN.Doccheck@sgs.com
198 Kietu Road, Science Park Guangzhou Economic & Technology Development District, Guangzhou, China 510663 t (86-20) 82155661 f (86-20) 82075080 www.sgs.com.cn
中国·广州·经济技术开发区科学城科珠路198号 邮编: 510663 t (86-20) 82155661 f (86-20) 82075080 e sgs.china@sgs.com

Member of the SGS Group (SGS SA)





TEST REPORT

No. : GZIN1502006276PS

Date : Feb 15, 2015

Page: 4 of 4

Test Results:

Specimen	Original Mass (g)	Post Mass (g)	Residues (seconds)	Mass Loss (percent)
1	40.2	32.8	0.0	18.4
2	40.5	39.3	0.0	3.0
3	39.7	35.7	0.0	10.1
4	40.6	39.2	0.0	3.4
5	40.6	33.8	0.0	16.7
6	40.8	38.7	0.0	5.1
7	39.8	38.5	0.0	3.3
8	40.3	39.2	0.0	2.7
9	40.4	37.4	0.0	7.4
10	39.9	38.5	0.0	3.5
AVG			0.0	7.4
3*STDEV			---	17.6
AVG+3STDEV			---	25.0

Conclusion: PASS

Appendix Information:

The above test was carried out by SGS internal laboratory.

***** End of report*****



This document is issued by the Company subject to its General Conditions of Service printed overleaf, available on request or accessible at <http://www.sgs.com/en/terms-and-conditions.aspx> and, for electronic format documents, subject to Terms and Conditions for Electronic Documents at <http://www.sgs.com/en/terms-and-conditions/terms-e-document.aspx>. Attention is drawn to the limitation of liability, indemnification and jurisdiction issues defined therein. Any holder of this document is advised that information contained hereon reflects the Company's findings at the time of its intervention only and within the limits of Client's instructions, if any. The Company's sole responsibility is to its Client and this document does not exonerate parties to a transaction from exercising all their rights and obligations under the transaction documents. This document cannot be reproduced except in full, without prior written approval of the Company. Any unauthorized alteration, forgery or falsification of the content or appearance of this document is unlawful and offenders may be prosecuted to the fullest extent of the law. Unless otherwise stated the results shown in this test report refer only to the sample(s) tested and such sample(s) are retained for 30 days only.

Attention: To check the authenticity of testing / inspection report & certificate, please contact us at telephone: (86-755) 8307 1443, or email: CN.Doccheck@sgs.com
198 Kietu Road, Science Park, Guangzhou Economic & Technology Development District, Guangzhou, China 510663 t (86-20) 82155661 f (86-20) 82075080 www.sgs.com.cn
中国·广州·经济技术开发区科学城科珠路198号 邮编: 510663 t (86-20) 82155661 f (86-20) 82075080 e sgs.china@sgs.com

Member of the SGS Group (SGS SA)



Manufacturer's Inspection

RIDE:

LOCATION:

ITEMS	COMMENTS
Unit inflates properly	
Seams are inspected	
Doors are inspected for proper fit	
Spouts are inspected	
Zippers inspected	
Unit is coded	
Instructions and labels included	
Sand bags and/or stakes included	
Hardware included	
Hardware inspected	
All tie downs are in place	
All anchor points are sound	
Unit has correct amount of inflation (no sagging or buckles in walls, floor and roof)	
Motion base and control console inspected	
Ride attachment inspected	
General	

SHIPPED TO

--

MANUFACTURER: Galaxy America**REF:** ASTM F 846-92

I, _____, hereby certify as follows:

_____ has been inspected and tested upon completion of assembly and
(RIDE NAME)prior to shipping to _____. _____ is in proper
(PURCHASER) (RIDE NAME)

and safe working order.

Signature: _____ Date: _____



Warranty

Galaxy Multi Rides warrants its mechanical rides to be free from defects in materials and workmanship for a period of five years from date of purchase.

Galaxy Multi Rides is proud to announce we are now offering a 5 year warranty* on all new systems as of August 1st 2014. We have so much confidence in the quality of our products, we are more than happy to offer a five-year warranty giving 100% piece of mind that your investment is covered for 5 years.

To qualify you have to return your system to us every twelve months for a **free** inspection service. At the same time you are entitled to a **free training refresher course**; maybe you have a new member of staff or you just want an update on the safety procedures?

We are here to serve: our aim is for everyone to be able to offer a high quality well maintained ride attraction with competent fully trained operators.

Ultimately it will result in lower insurance premiums and will set you apart from the competition.

Some customers are concerned about the cost of shipping it back. We have done some sample costing on the shipping:

- The worse case scenario is around \$700 return shipping from Seattle.
- This is only \$13.50 a week investment to give you piece of mind for a well maintained system over 5 years.

We are sure you will agree this is well worth it.

During the warranty period, if the mechanical ride is found by Galaxy America, in its sole judgment, to be defective, will be repaired or replaced, at the option of Galaxy America, without charge to the purchaser, except for the cost of freight and mailing.

Galaxy America disclaims liability for any incidental or consequential damages whatsoever.

The foregoing express warranty constitutes the sole and exclusive remedy of the purchaser and the limit of Galaxy America's liability.

This warranty is given in lieu of any and all other warranties, including, without limitation, the implied warranties of merchantability and fitness for particular purpose are specifically disclaimed.

*Terms & Conditions of Warranty

- The mechanical motion base and electrical control console are covered for parts against component failure, for five years.
- The motion base and control console must be sent to our factory in Port Charlotte, Florida (US) every twelve months for a standard inspection service, which is free.
- If we find any component that needs repair or replacing we will do it, or if it is not a warranty issue we will advise the customer first.
- If the motion base and console are not serviced by us every twelve months the warranty is voided.
- The inflatable cushion and ride attachment are covered for two years.
- All warranties do not cover normal wear, tear, abuse or accidental damage.
- If the warranty is not validated by a completed Certificate of Training within one month of Purchase the warranty is voided.
- The following components are not included in the warranty as they are deemed as consumable items: graphics, and art work.



Terms and Conditions of Sale

GALAXY AMERICA, INC. ("Company") hereby offers its products for sale to the buyer described on the front of this form ("Buyer") upon the terms contained herein ("Terms"). Buyer hereby expressly agrees that the Terms shall govern the contract of sale between Company and Buyer. If any terms differ between this document and any Buyer-drafted document, these Terms shall govern and control.

A. GENERAL CONTRACT TERMS & CONDITIONS

1. Company agrees to honor all price quotations for 30 days from the date of the quotation (subject to the availability of the goods as of the date the order is confirmed by the Company).
2. Order acceptance by Buyer constitutes an unqualified acceptance of Company's written quotation and its contents, conditions, and Terms.
3. Buyer's acceptance of the goods at delivery is conclusive evidence Buyer accepts the goods' condition.
4. Buyer shall maintain in force, and shall continue to maintain in force at all times while it owns or operates the goods being sold by Company, insurance with a carrier(s) with financial strength of at least A- VIII or better as defined by AM Best sufficient to cover any and all general and product liability claims which may be brought with respect to the goods.

B. CHANGES IN PRODUCT SPECIFICATIONS

Descriptions, illustrations, specifications, drawings, and particulars of weights and dimensions in quotes, proposals, catalogs, advertisements, or any other documents are approximate only. Company's goods include design and artistic work that is not capable of precise definition and Company's obligation to supply goods to Buyer is limited to supplying goods reasonably in compliance with any specifications provided. Company reserves the right to change its products at any time without notice, including changes in materials, dimensions, colors, and design.

C. COMPLAINTS AND WARRANTY

1. Any implied warranty of merchantability, implied warranty of fitness, and warranty of title is excluded from this Contract. There are no warranties which extend beyond the description on the face hereof. Company's liability with respect to any defect in goods or for any loss, injury, or damage attributable thereto shall be limited to one of the following as determined by the Company in its sole and absolute discretion: (a) repairing defective goods at the Company's facilities with Buyer being responsible for transporting the goods to and from the facilities and all costs of repair, or (b) supplying new goods in exchange for defective goods. In no circumstance shall Company be liable for consequential losses or damages.
No claim against Company shall be valid unless and until: (a) the claim is specifically detailed in writing to Company within the specific warranty period of the goods' delivery date, and (b) Company has examined the goods (in the case of returned goods), and (c) goods are installed and demonstrated at the time of installation by the Company or installed by Buyer as directed by the Company.
2. Buyer agrees that the goods have a limited life, the length of which is determined by the amount of use. Consequently, goods used extensively will not last as long as goods used occasionally. Buyer agrees that it has no claim for any loss or damage because of goods deteriorating through use. Play items fitted on an inflatable are subjected to abnormal wear and shall not be the subject of a warranty claim of any nature.
Any defect arising from misuse, abuse, or disregard of the Company's operation instructions automatically invalidates any and all warranties. Rubber heads, horns and ears, bull hide, grab ropes, jack plug and sockets for connections, carpet/vinyl base, foam podiums, fom sweeper arms, graphics and artwork are not covered by any warranty whatsoever.
3. All goods returned to Company for work under warranty or work undertaken at Buyer's request and at its cost, shall be returned in a clean and dry condition properly rolled and/or packed. Should the Company judge that the goods are not in fit condition as to cleanliness, Buyer shall bear all costs of putting such goods in fit condition by removing them for cleaning or providing labor to return the goods to fit condition. Whether repair work is done under warranty or upon Buyer's commission. Buyer is responsible for the cost of shipping goods to and from the Company.
4. The mechanical motion base and electrical control console are covered for parts against component failure, for five years. The motion base and control console must be sent to our factory in Port Charlotte Florida every twelve months for a standard inspection service, which is free. We will check the motion base & console, lubricate all bearings, check all the electronics and give them a thorough clean. Buyer is responsible for the cost of shipping goods to and from the Company.
If we find any component that needs repair or replacing we will do it, or if it is not a warranty issue we will advise the customer first.
If the motion base & console are not serviced by us every twelve

months the warranty is voided.

If the warranty is not validated by a completed Certificate of Training within one month of Purchase the warranty is voided.

The inflatable cushion and ride attachment are covered for two years. All warranties do not cover normal wear, tear, abuse or accidental damage.

5. All goods should be returned to the Company for work under warranty or work undertaken at Buyer's request. Any "Do It Yourself" (DIY) repair performed by the Buyer or the Buyer's contractor or service provider voids our warranty and transfers liability for any damage during the repair or for any damage as a result of the repair to the Buyer and/or contractor and/or service provider performing the aforementioned repair.

D. PRICES

Unless otherwise agreed to in writing by Company and Buyer:

1. All prices quoted are for goods F.O.B. 7431 Sawyer Circle, Port Charlotte, FL 33981, and **exclude** all taxes and other charges, including but not limited to, import duties, landing, and warehousing charges;
2. A 50% **nonrefundable deposit** is due on the date of Buyer's order; and
3. The balance is due in cleared funds prior to the delivery date.
4. Company reserves the right to change the price in the event of fluctuations in the cost of labor, materials, currency exchange rates, or import duty occurring during the manufacturing process.

E. FINANCING

1. In the event the goods are financed, the goods remain the property of the Finance Company until the Finance Company is paid in full. Buyer is expressly prohibited from selling, parting with possession, leasing, or in any other way disposing of the goods. A Buyer financing the purchase of Company's goods agrees to keep the goods in good condition, in full working order, and fully insured with Company as a named insured during the financing term. If Buyer (a) fails to pay Company any sums due in accordance with the financing terms, (b) breaches any of these Terms, or (c) files for bankruptcy protection, Company shall be entitled to immediately repossess the goods.
2. Notwithstanding anything herein, Company is not obligated to retake possession of the goods. If Company does not repossess the goods, Buyer is responsible for the full price of the goods should the goods be damaged or destroyed or become unusable due to changes in the law, imposition of taxes, or any other reason.

F. DELIVERY

1. **Shipping dates are an indication of endeavour to comply, but not guaranteed and are not the essence of any contract. All goods are shipped on an ex works basis; the goods must be paid in full with cleared funds prior to dispatch. The customer is responsible for the cost of shipping.**
2. **Delivery is made as of the date the Company designates in its notice to Buyer that the goods are available to Buyer at Company's facilities at 7431 Sawyer Circle, Port Charlotte, Florida, 33981.**
3. **Risk of loss is Buyer's on the delivery date described above notwithstanding Buyer's failure to take possession of the goods. Company shall not be liable for consequential loss or any other loss or damages, whatsoever.**
4. **Buyer expressly agrees that it is solely responsible all costs and arrangements for picking up, loading, shipping, and insuring the goods from Company's facilities on the delivery date.**

G. EXPORT/IMPORT

1. This sales contract is subject to Company's ability to obtain any necessary export permissions.
2. **Buyer solely responsible for obtaining all necessary import permissions.**

H. COPYRIGHT AND TRADEMARK

1. All Company prepared proposals, drawings, designs, brochures, and other materials remain the Company's property and shall not be reproduced in any manner without Company's prior written permission.
2. If Buyer provides Company with any specifications or descriptions for use in manufacturing goods, Buyer shall indemnify Company against any claims that the use of such specifications or descriptions is improper or infringes upon the intellectual property rights of another.
3. Company reserves the right to display Company's trademark on all goods. Buyer will not remove or deface Company's trademarks, and Buyer will prevent the removal or defacement of Company's trademarks.

I. GOVERNING LAW AND NOTICE

The contract between Company and Buyer shall be governed by the laws of the State of Florida. The Company's Terms and Conditions supersede all others and are final. All notices to Company or Buyer shall be by overnight delivery to the addresses listed for the company.

